

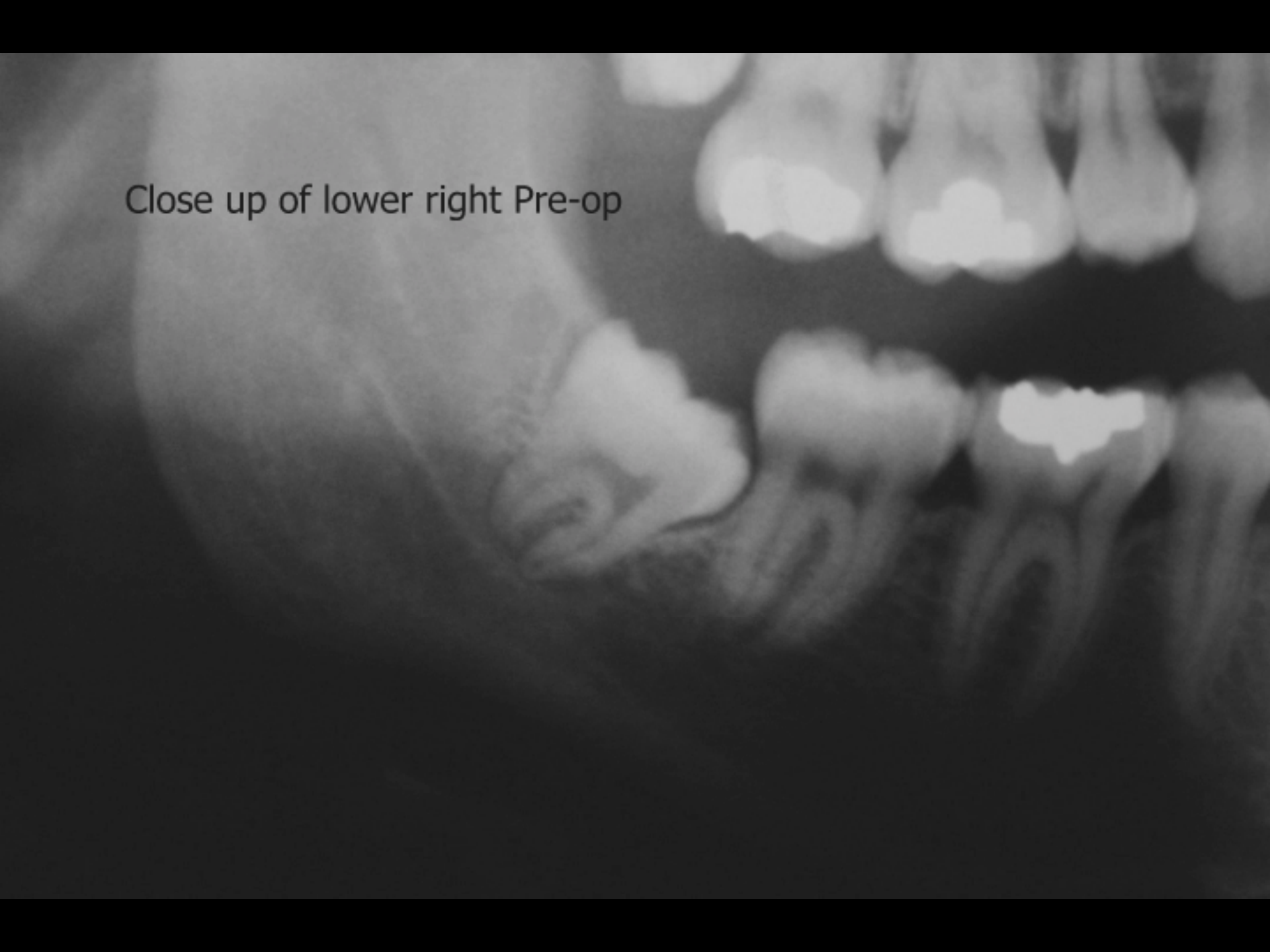
A new approach to
Prevent bone voids
And avoid dry sockets

Synthetic Bone Graft for sockets

Pre-Operative April 1996



Close up of lower right Pre-op



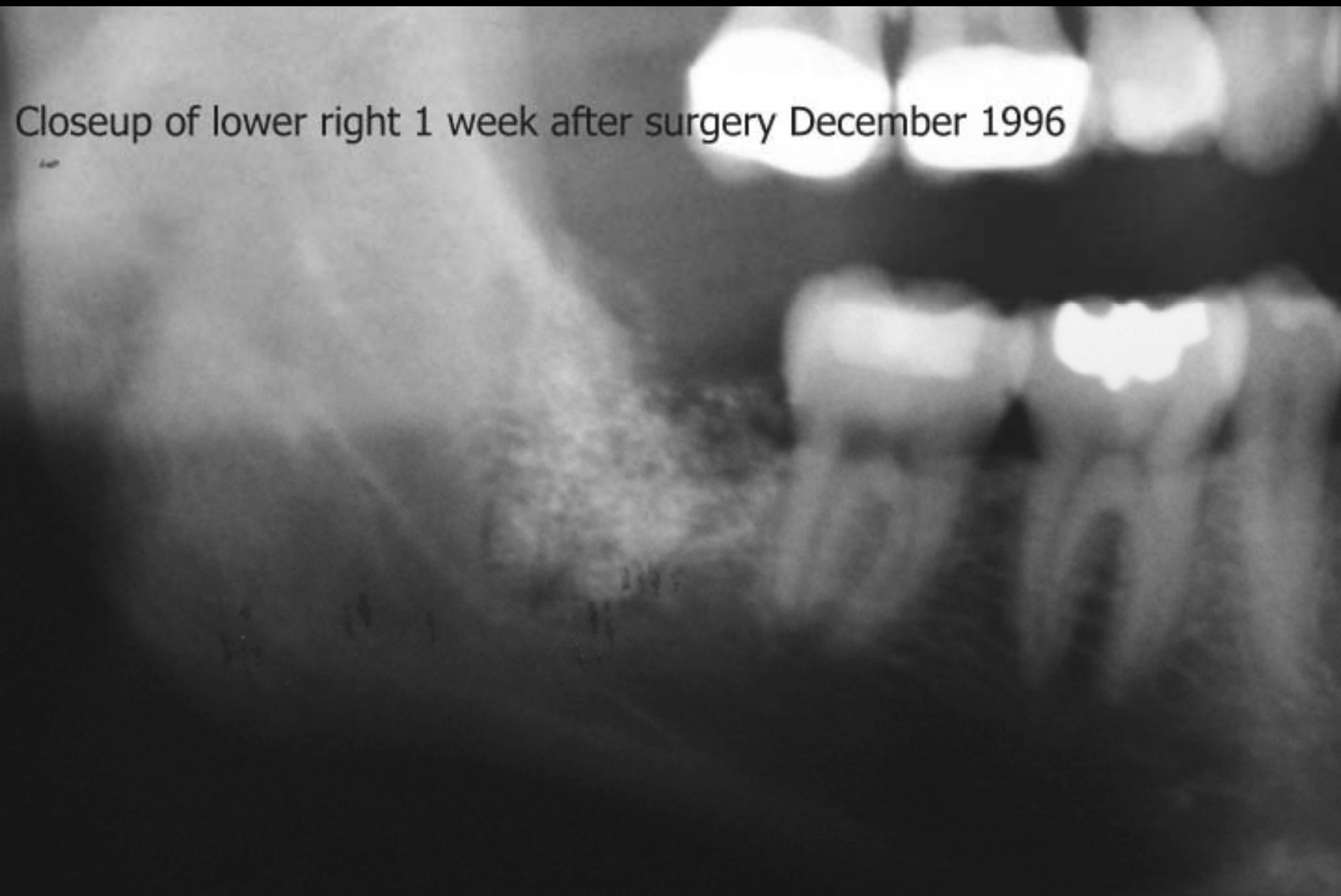


Closeup of lower left Pre-op April 1996

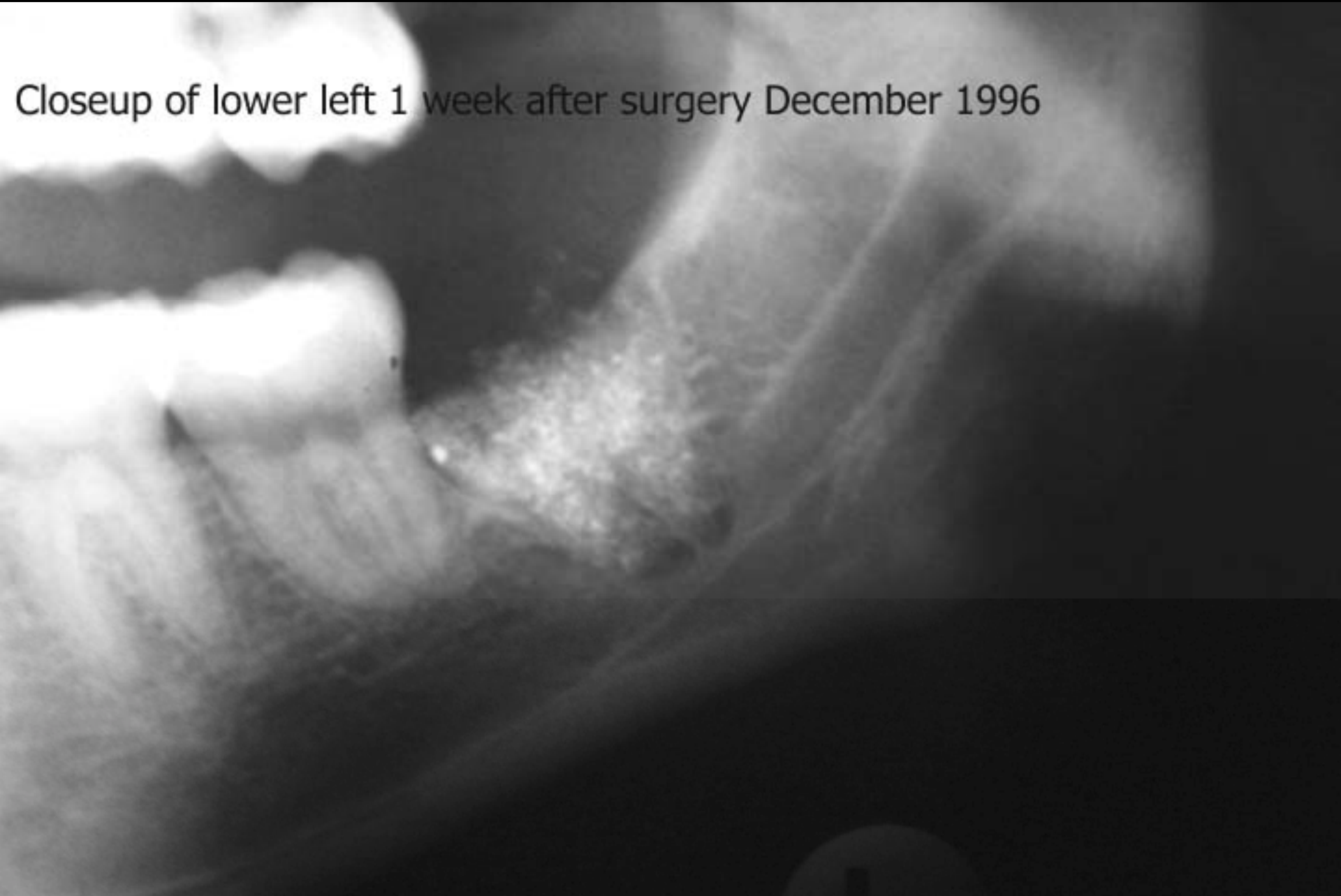
1 week after surgery and bone graft December 1996



Closeup of lower right 1 week after surgery December 1996



Closeup of lower left 1 week after surgery December 1996

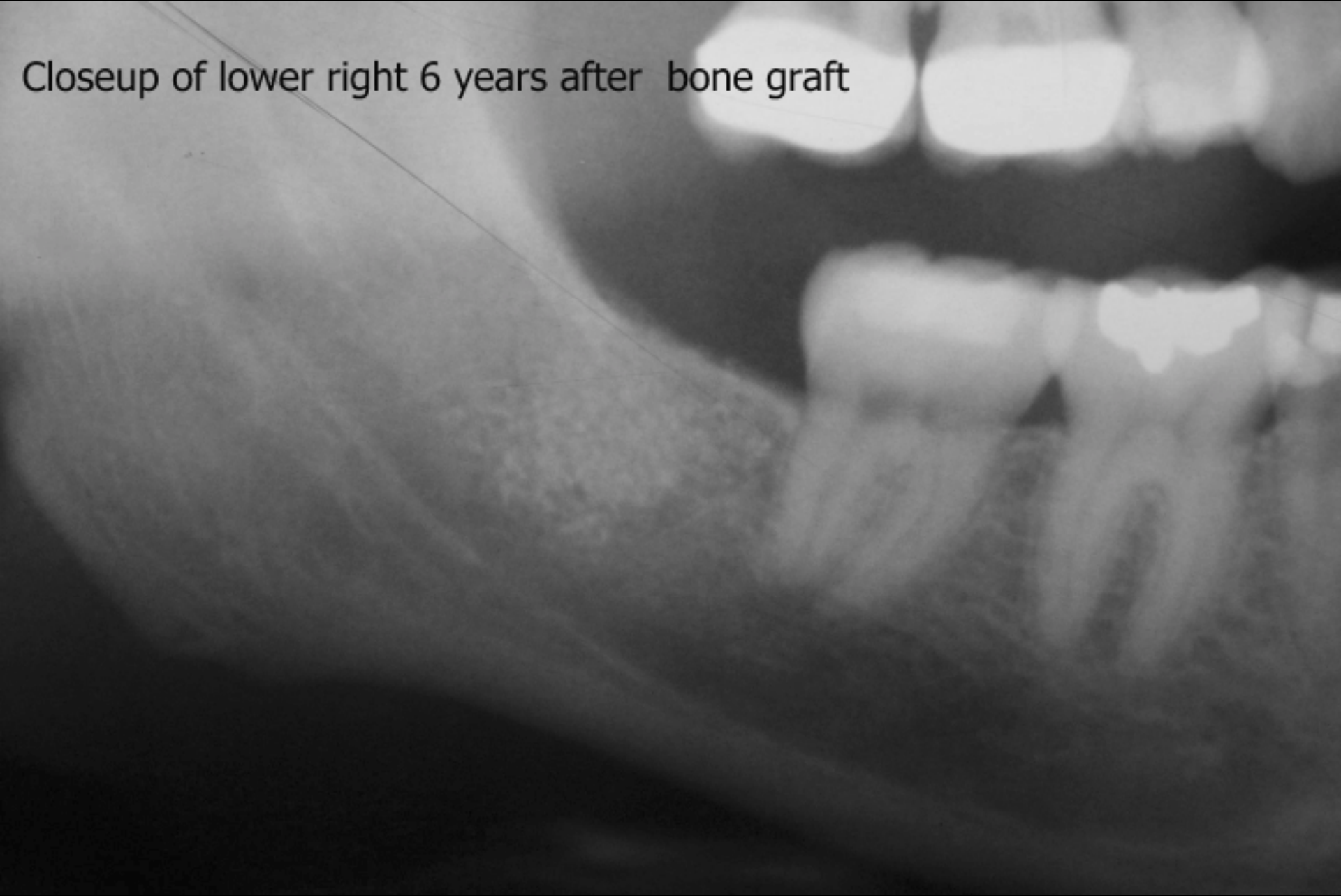





6 years after surgery and bone graft August 2002




Closeup of lower right 6 years after bone graft



A grayscale panoramic radiograph (X-ray) of a human jaw. The image shows the lower left quadrant, including the mandible and the roots of several teeth. A distinct, textured area of bone is visible, representing the site of a bone graft performed six years prior. The surrounding bone structure appears relatively normal, with clear cortical and trabecular patterns. The teeth are partially visible, showing their roots extending downwards. The overall image is in grayscale, typical of medical radiography.

Closeup of lower left 6 years after bone graft



Reduce jaw bone loss after tooth removal
And avoid 'Dry Sockets' with
Synthetic Sterile Bone Grafts at the time
Of surgery.